

SINGLE-FRAME

## NIGHTTIME

See activity after dark  
at important locations

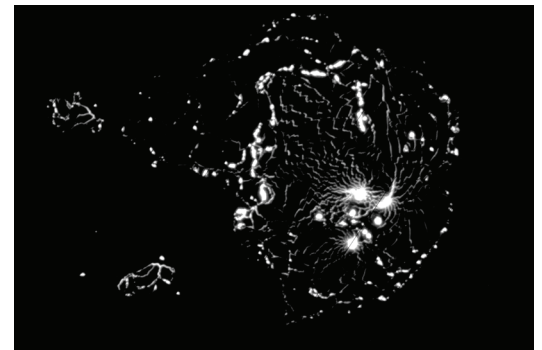
Shanghai, China

Human activity isn't limited to daytime hours, and space-based intelligence shouldn't be limited either. BlackSky captures artificial illumination at night, enabling organizations to gain greater insight into pattern of life, change and anomalies at areas of interest.

### Benefits of nighttime

Create a fuller picture of an area's operations by understanding its nighttime activity.

- Task nighttime imagery using secure web portal or API connection
- Determine whether areas of interest are illuminated at night
- Observe conflict or troop movement and verify other data sources
- Evaluate activity levels at key facilities
- Observe change



Kilauea volcano, United States  
Midnight view of an active volcano.



Marina Bay, Singapore  
Drivers compete at a race car qualifying session.

# NIGHTTIME SPECIFICATIONS

See activity after dark at important locations.

	Nighttime
Collection to delivery	90 minutes <sup>1</sup>
Revisit	60 minutes <sup>1</sup>
Solar elevation range	-5° to -90°
Best Ground Sample Distance (GSD) at nadir	83 cm
Minimum scene size	Minimum 24 km <sup>2</sup> (4 x 6 km)
Spectral bands	Panchromatic
File formats	GeoTIFF, NITF 2.1
Processing level	Non-ortho
Available in Archive	No

<sup>1</sup> Timelines are subject to change and vary by customer and architecture.

## Explore BlackSky Products



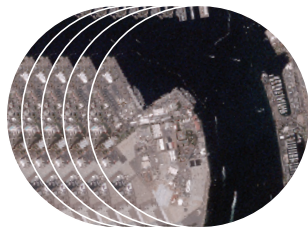
**Daytime**  
Get insights in time  
to decide



**Area 2x1**  
See larger areas



**Stereo**  
Build your own  
3D products



**Burst**  
Analyze motion



**Detect**  
Automatically  
understand objects

To learn more about how BlackSky can help your organization, contact [sales@blacksky.com](mailto:sales@blacksky.com) or visit [blacksky.com](https://blacksky.com).

**BLACK**(SKY)